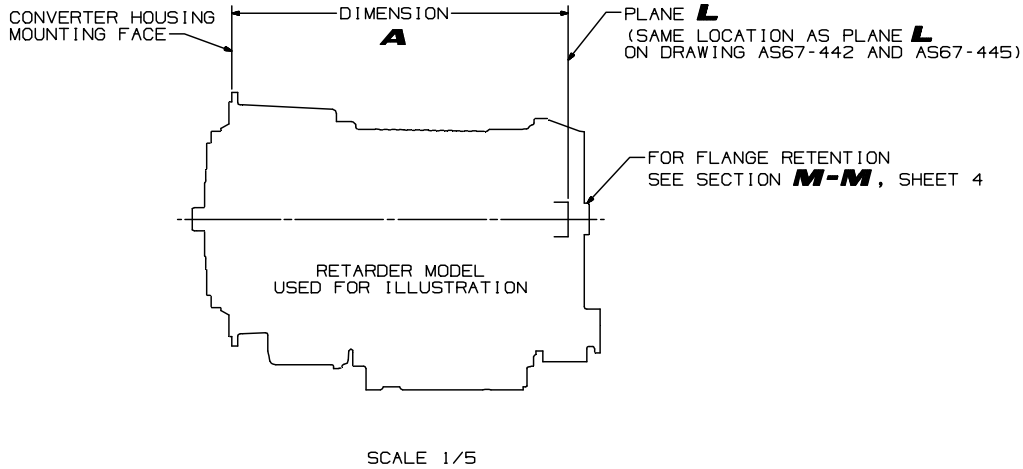


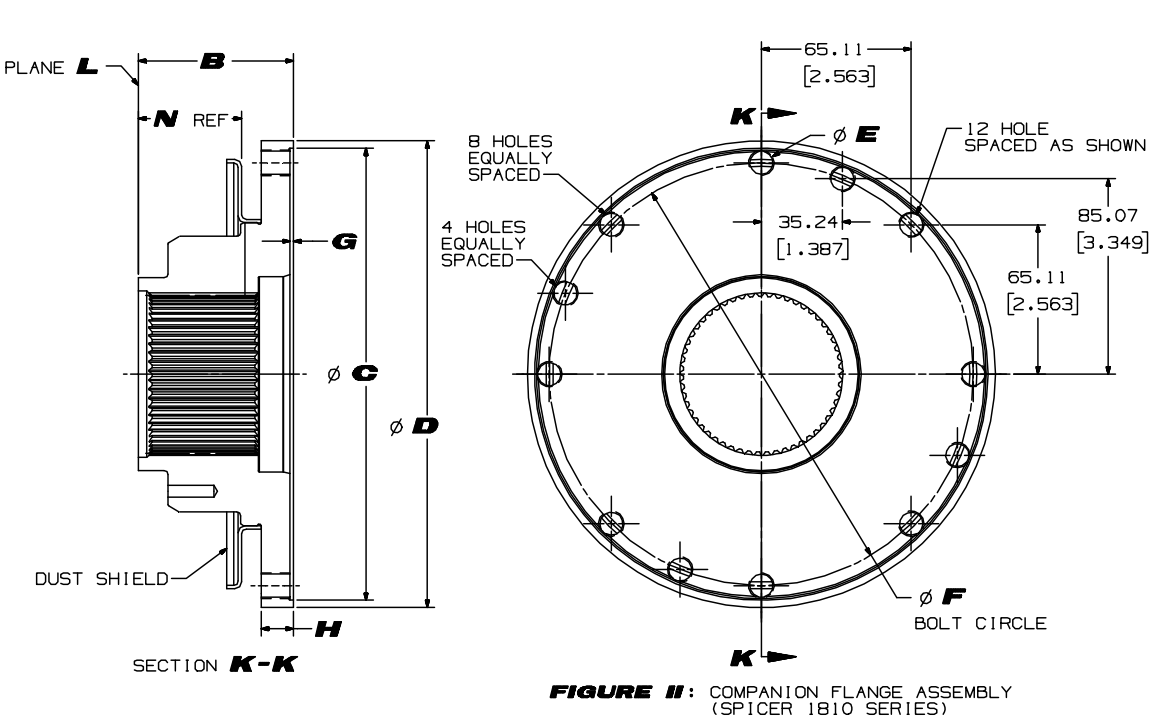
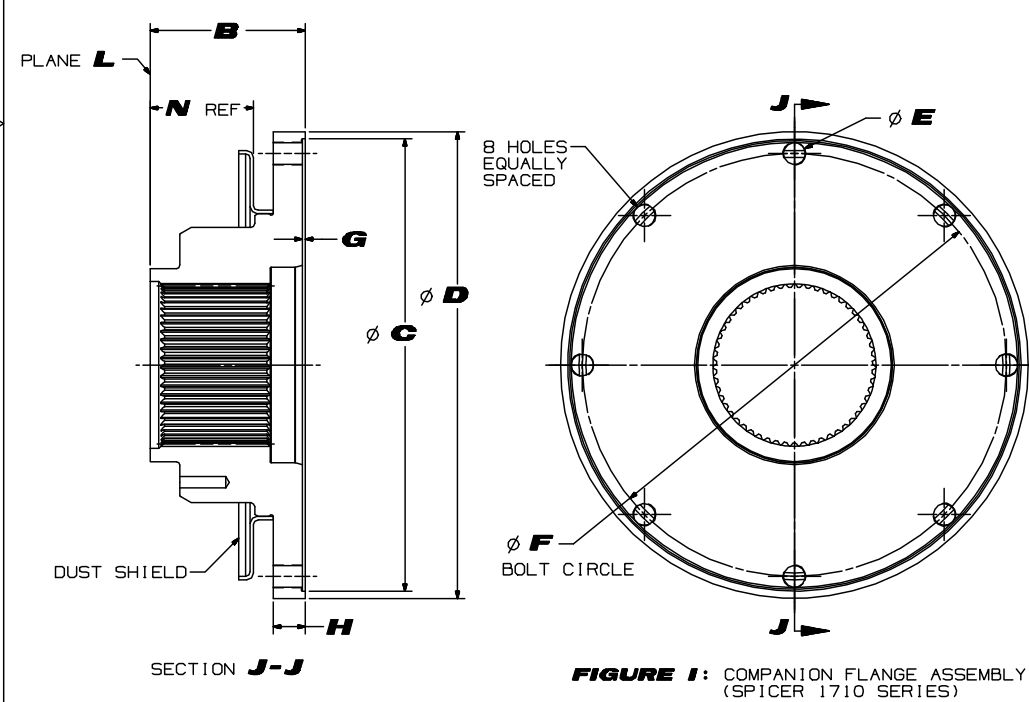
OUTPUT CONFIGURATION DETAIL DIMENSIONS - ALLISON COMPONENTS		
	FIGURE I	FIGURE II
ASSEMBLY PART NUMBER	ALLISON 29541100	ALLISON 29541101
PART NAME AND DESCRIPTION	1710 SERIES -THREADED HOLES-	1810 SERIES -THREADED HOLES-
DUST SHIELD	ALLISON 29540165 INCLUDED	ALLISON 29540165 INCLUDED
DIMENSION <b>B</b>	67.3 (2.65)	67.3 (2.65)
DIAMETER <b>C</b>	196.85-196.90 (7.750-7.752)	196.85-196.90 (7.750-7.752)
DIAMETER <b>D</b>	202.4-204.0 (7.97-8.03)	202.4-204.0 (7.97-8.03)
DIAMETER <b>E</b>	.375-24 UNF 2B INCH SERIES THREAD	.4375-20 UNF 2B INCH-SERIES THREAD
DIAMETER <b>F</b>	184.15 (7.250)	184.15 (7.250)
DIMENSION <b>G</b>	1.27-1.52 (.050-.060)	1.27-1.52 (.050-.060)
DIMENSION <b>H</b>	11.9 (.47)	11.9 (.47)
DIMENSION <b>N</b> REF	44.9 (1.93)	44.9 (1.93)
APPROXIMATE WEIGHT	5.3 kg (11.7 LB)	5.2 kg (11.6 LB)
NUMBER OF BOLTS REQUIRED	8-SAE GRADE 8	12-SAE GRADE 8
BOLT SIZE	.375-24 UNF 2A INCH SERIES THREAD	.4375-20 UNF 2A INCH SERIES THREAD
BOLT TORQUE	56-66 N·m (41-49 LB-FT)	87-104 N·m (64-77 LB-FT)
MAXIMUM NET DRIVE SHAFT TORQUE	10440 N·m (7700 LB-FT)	16400 N·m (12100 LB-FT)

MATING FLANGED YOKE SUPPLIED AND INSTALLED BY THE VEHICLE BUILDER				
FLANGED YOKE-MATING	DRIVELINE SERIES	VENDOR PART NUMBER	USE WITH ALLISON PART NUMBER FLANGE	FIGURE *
SPICER	1600/1610	5-2-619	29541100	I
		5-2-629	29541100	I
		6-2-769	29541100	I
		6-2-749	29541100	I
		6-2-839	29541100	I
	1700/1710	6-2-779	29541100	I
		1760	29541101	II
		1800/1810	29541101	II
		6.5-2-329	29541101	II
		6.5-2-359	29541101	II

TRANSMISSION CONFIGURATION	DIMENSION <b>A</b>
BASIC	725.7 (28.57)
WITH POWER TAKE-OFF	798.7 (31.45)
WITH RETARDER	725.7 (28.57)
WITH POWER TAKE-OFF AND RETARDER	798.7 (31.45)



COMPANION FLANGE ASSEMBLIES WITH THREADED HOLES: 6-SPEED MODELS ONLY



NOTE: BOLTS MUST HAVE A PROVISION, SUCH AS A NYLON LOCKING PATCH, TO MINIMIZE RISK OF LOOSENING

TORQUES SHOWN ARE FOR PLAIN (NON-PLATED) FASTENERS AND OTHER THREADED COMPONENTS SUPPLIED AND INSTALLED BY THE VEHICLE BUILDER. TORQUE REQUIREMENTS SHOULD BE REVIEWED IF PLATED FASTENERS WILL BE USED.

RETARDER MODEL TRANSMISSIONS REQUIRE FLANGES WITH THREADED HOLES AND A DUST SHIELD.

DIMENSIONS SHOWN IN PARENTHESES ARE IN INCHES, AND FOR REFERENCE ONLY

FR1 DWG. NO. AS67-441

FR2

CHANGE RESTRICTED

METRIC

THIRD ANGLE

CURRENT CHG LETTER

SHEET 2 L

SHEET 3 L

SHEET 4 L

THE INFORMATION CONTAINED HEREIN IS PROPRIETARY AND THE PROPERTY OF ALLISON TRANSMISSION, INC. AND MAY NOT BE REPRODUCED, DISCLOSED OR USED FOR ANY PURPOSE OTHER THAN A QUOTATION TO OR ON ORDER FROM ALLISON TRANSMISSION, INC. WITHOUT THE SPECIFIC WRITTEN AUTHORIZATION OF ALLISON TRANSMISSION, INC.

FR1

DWG. NO.

AS67-441

LTR SH

L 1

ALLISON Transmission

Indianapolis, Indiana, USA

INSTL DWG-OUTPUT FLANGE INFORMATION

MODEL 4000 PRODUCT FAMILY

SIZE/CAGE CODE/DWG NO

R 73342 AS67-441

SCALE 1/1

CURRENT STATUS: RX-Released - EXP

REVISIONS

REV

DESCRIPTION

DATE

DWCHK

1

(1)REMOVED "ALLISON 4TH GENERATION" BLOCK

(2)SEE SHEET 2

(3)SEE SHEET 3

(4)SEE SHEET 4

310C16 RH/JF

2

(1)REVISED INCH CONVERSIONS FOR FIGURE II

(2,3)SEE SHEET 2

(3,4)SEE SHEET 3

26MR13 RH/JF

3

(1,2)SEE SHEET 2

(4,8)SEE SHEET 3

(9)SEE SHEET 4

130E10 RH/JF

4

(1-3)SEE SHEET 2

(4-8)SEE SHEET 3

(9)SEE SHEET 4

20AP10 RH/JF

5

(1-8)SEE SHEETS 3 AND 4

(6-13)SEE SHEET 4

06JA09 RH/JF

6

(1)SECTION **K-K** REVISE DIM, **N** REF WAS **Y** REF

(2-5)SEE SHEET 2

(6-13)SEE SHEET 4

05NO08 MT/MF

7

(1-2)SEE SHEET 2

(3-5)SEE SHEET 3

(6-13)SEE SHEET 4

23SE08 MT/MF

8

REVISED TITLE "COMPANION FLANGE ASSEMBLIES WITH THREADED HOLES: 6-SPEED MODELS ONLY" WAS "COMPANION FLANGE/DUST SHIELD ASSEMBLIES THREADED HOLES 6-SPEED MODELS ONLY"

REVISED "OUTPUT CONFIGURATION DETAIL DIMENSIONS - ALLISON COMPONENTS" BLOCK

RELOCATED OUTPUT FLANGE RETENTION VIEW M TO SHEET 4

REVISED TABLE "MATING FLANGED YOKE AND INSTALLED BY THE VEHICLE BUILDER" WAS "CUSTOMER FURNISHED FLANGED YOKE MATING"

SEE SHEETS 2 AND 3

ADDED SHEET 4

05FE08 RH/JF

9

REVISED TITLE "COMPANION FLANGE/DUST SHIELD ASSEMBLIES 6-SPEED MODELS ONLY" WAS FLANGE/DUST SHIELD ASSEMBLIES 6-SPEED MODELS ONLY"

ADDED "12 HOLES SPACED AS SHOWN" CALLOUT TO FIGURE II

ADDED "8 HOLES EQUALLY SPACED" CALLOUT TO FIGURE II

ADDED "4 HOLES EQUALLY SPACED" CALLOUT TO FIGURE II

REVISED ".4375-20 UNF 2B INCH-SERIES THREAD" WAS "11.16-11.21 (.439-441)"

FIGURE I BLOCK ".375-24 UNF 2B..." WAS ".375-24 UNF 2A"

SEE SHEETS 2 AND 3

11SE06 RH/JF

10

(1)SEE SHEET 3

(2)SEE SHEET 4

12SE05 RH/JF

11

(1)SEE SHEET 3 (23131)

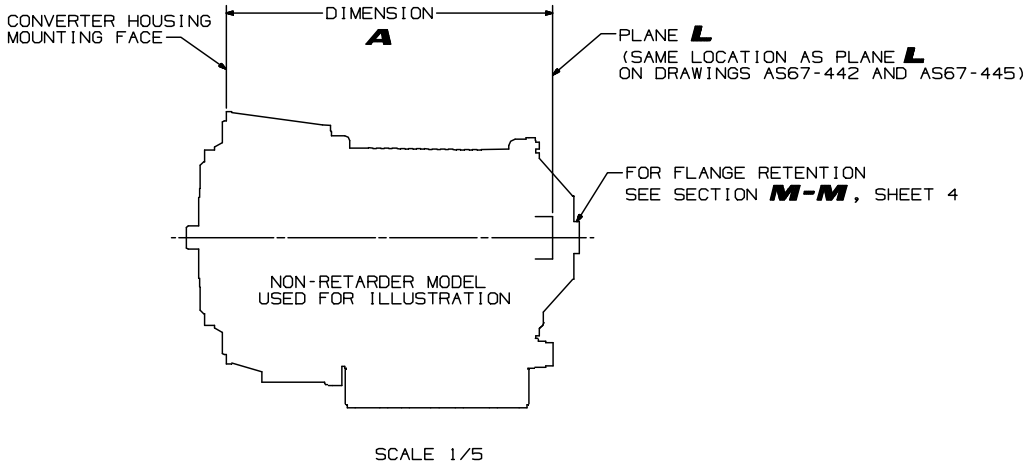
(2)SEE SHEET 4

16MY05 MD/MF

OUTPUT CONFIGURATION DETAIL DIMENSIONS - ALLISON COMPONENTS			
	FIGURE III	FIGURE IV	FIGURE V
ASSEMBLY PART NUMBER	ALLISON 29541098	ALLISON 29541099	ALLISON 29553892
PART NAME AND DESCRIPTION	1710 SERIES -THRU HOLES-	1810 SERIES -THRU HOLES-	ISO 180 CROSS-SERRATED
DUST SHIELD	ALLISON 29540165 ORDER SEPARATELY	ALLISON 29540165 ORDER SEPARATELY	INCLUDED
DIMENSION <b>B</b>	67.3 (2.65)	67.3 (2.65)	69.1 (2.72)
DIAMETER <b>C</b>	196.85-196.90 (7.750-7.752)	196.85-196.90 (7.750-7.752)	NOT APPLICABLE
DIAMETER <b>D</b>	202.4-204.0 (7.97-8.03)	202.4-204.0 (7.97-8.03)	179.0-180.0 (7.05-7.09)
DIAMETER <b>E</b>	9.58-9.63 (.377-.379)	11.16-11.21 (.439-.441)	NOT APPLICABLE
DIAMETER <b>F</b>	184.15 (7.250)	184.15 (7.250)	150.0 (5.91)
DIMENSION <b>G</b>	1.27-1.52 (.050-.060)	1.27-1.52 (.050-.060)	1.5 (.059)
DIMENSION <b>H</b>	11.9 (.47)	11.9 (.47)	17.1 (.67)
DIMENSION <b>N</b> REF	44.9 (1.93)	44.9 (1.93)	NOT APPLICABLE
APPROXIMATE WEIGHT	5.0 kg (11.0 LB)	5.0 kg (11.0 LB)	4.5 kg (9.9 LB)
NUMBER OF BOLTS REQUIRED	8-SAE GRADE 8	8-SAE GRADE 8	NOT APPLICABLE
NUMBER OF LOCKING NUTS REQUIRED	8-SAE GRADE-8	8-SAE GRADE-8	4-150 CLASS 10
BOLT SIZE	THRU-HOLE FOR .375 INCH-SERIES BOLT	THRU-HOLE FOR .4375 INCH SERIES BOLT	SEE FIGURE V
BOLT TORQUE	56-66 N·m (41-49 LB-FT)	87-104 N·m (64-77 LB-FT)	162-198 N·m (120-146 LB-FT)
MAXIMUM NET DRIVE SHAFT TORQUE	10440 N·m (7700 LB-FT)	16400 N·m (12100 LB-FT)	NOT AVAILABLE
TORQUE CAPACITY OF FLANGE *	NOT AVAILABLE	NOT AVAILABLE	22400 N·m (16521 LB-FT)

MATING FLANGED YOKE SUPPLIED AND INSTALLED BY THE VEHICLE BUILDER				
FLANGED YOKE-MATING	DRIVELINE SERIES	VENDOR PART NUMBER	USE WITH ALLISON PART NUMBER FLANGE	FIGURE
SPICER	1600/1610	5-2-619	29541098	III
		5-2-629	29541098	III
	1700/1710	6-2-769	29541098	III
		6-2-749	29541098	III
		6-2-839	29541098	III
		6-2-779	29541098	III
	1760	6.3-2-19	29541099	IV
	1800/1810	6.5-2-79	29541099	IV
		6.5-2-329	29541099	IV
		6.5-2-359	29541099	IV

TRANSMISSION CONFIGURATION	DIMENSION <b>A</b>
BASIC	725.7 (28.57)
WITH POWER TAKE-OFF	798.7 (31.45)
WITH RETARDER	725.7 (28.57)
WITH POWER TAKE-OFF AND RETARDER	798.7 (31.45)



COMPANION FLANGE ASSEMBLIES WITH THRU HOLES: 6-SPEED MODELS ONLY

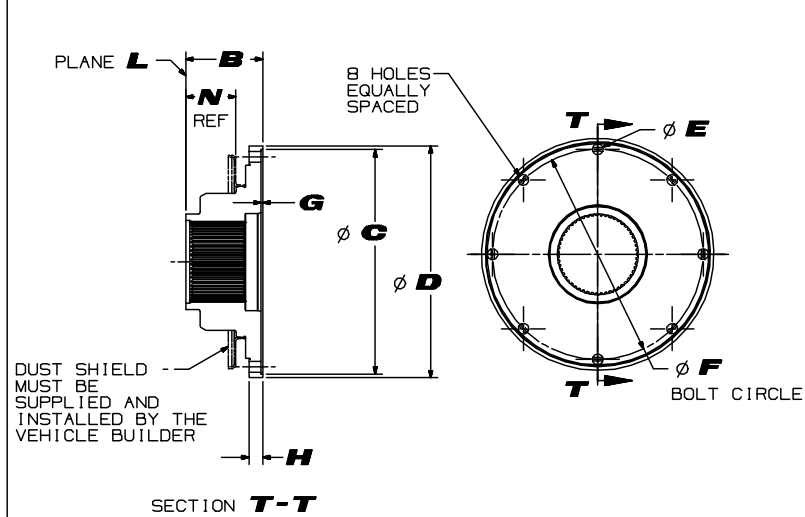


FIGURE III: COMPANION FLANGE ASSEMBLY (SPICER 1710 SERIES)

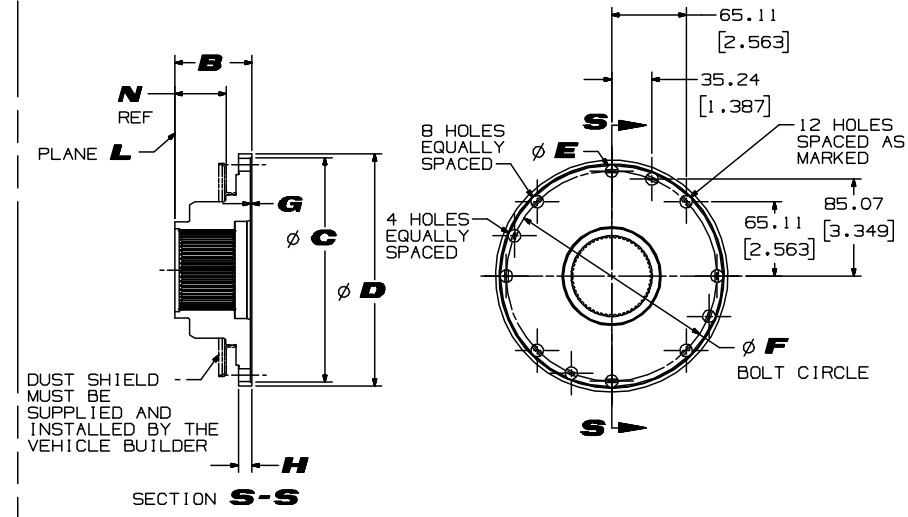


FIGURE IV: COMPANION FLANGE ASSEMBLY (SPICER 1810 SERIES)

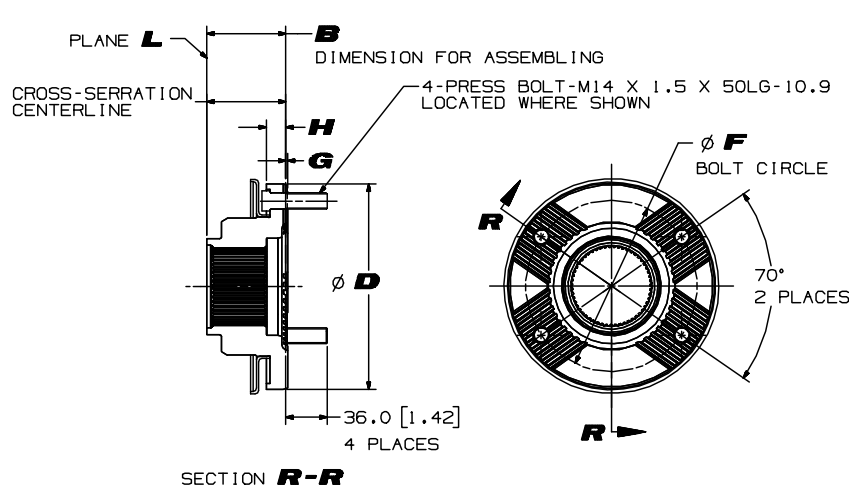


FIGURE V: ISO CROSS-SERRATED FLANGE

\* DRIVESHAFT TORQUE MAY BE LIMITED BY BOLTED JOINT TO COMPANION FLANGE OR BY OTHER DRIVELINE COMPONENTS.

NOTE: BOLTS MUST HAVE A PROVISION, SUCH AS A NYLON LOCKING PATCH, TO MINIMIZE RISK OF LOOSENING

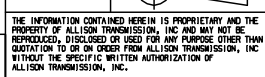
TORQUES SHOWN ARE FOR PLAIN (NON-PLATED) FASTENERS AND OTHER THREADED COMPONENTS SUPPLIED AND INSTALLED BY THE VEHICLE BUILDER. TORQUE REQUIREMENTS SHOULD BE REVIEWED IF PLATED FASTENERS WILL BE USED. CONSULT THE SUPPLIER.

RETARDER MODEL TRANSMISSION REQUIRE FLANGES WITH THREADED HOLES AND A DUST SHIELD. ISO CROSS-SERRATED FLANGES WITH BOLTS INSTALLED FROM THE TRANSMISSION SIDE ARE EXEMPT FROM THE THREADED HOLE REQUIREMENT.

L	(2)REMOVED "ALLISON 4TH GENERATION" BLOCK	310C16 RH/JF
K	(2)REVISED "FIGURE V" AND RELATED INFO ALLISON NO. "29553892" WAS "29541098"	
J	(3)REVISED INCH CONVERSIONS IN FIGURE IV	26MR13 RH/JF
J	(1)"TORQUE CAPACITY OF FLANGE * AND RELATED INFO" IN OUTPUT CONFIGURATION BLOCK	
J	(2)ADDED "4 DRIVESHAFT TORQUE ..." NOTE	13DE10 RH/JF
H	(1)ADDED DIMENSION <b>H</b> TO FIGURE V	
H	(2)REVISED OUTPUT CONFIGURATION CHART "DIAMETER <b>H</b> "	
H	(3)"NOT APPLICABLE" WAS "130-163 N·m (96-120 LB-FT)"	20AP10 RH/JF
F	(2)REVISE CHART, OUTPUT CONFIGURATION DETAIL...	
F	DUST SHIELD - FIGURE V:	
F	NOT AVAILABLE WAS NOT APPLICABLE	
F	(3)SECTION <b>T-T</b> REVISE NOTE, "DUST SHIELD MUST BE..."	
F	(4)SECTION <b>S-S</b> REVISE NOTE, "DUST SHIELD MUST BE..."	
F	(5)FIGURE V, REVISE GEOMETRY	05NO08 MT/MF
E	(1)"ADDED CALLOUT TO DIM <b>B</b> " DIMENSION FOR ASSEMBLING	
E	(2)"DIMENSION <b>B</b> , FIGURE V" 69.1 (2.72) WAS 70.3-70.9 (2.77-2.79)	23SE08 MT/MF
D	REVISED TITLE "COMPANION FLANGE ASSEMBLIES WITH THRU HOLES: 6-SPEED MODELS ONLY" WAS "COMPANION FLANGES WITH THRU HOLES 6-SPEED MODELS ONLY"	
D	REVISED "OUTPUT CONFIGURATION DETAIL DIMENSIONS - ALLISON COMPONENTS" CHART	
D	RELOCATED FIGURE IV: BLANK FLANGE TO SHEET 4	05FE08 RH/JF
C	REVISED TITLE "COMPANION FLANGES WITH THRU HOLES 6-SPEED MODELS ONLY" WAS "FLANGES WITH THRU HOLES 6-SPEED MODELS ONLY"	
C	ADDED "12 HOLES SPACED AS SHOWN" CALLOUT	
C	ADDED "4 HOLES EQUALLY SPACED" CALLOUT	
C	"8" WAS "12" HOLES EQUALLY SPACED	
C	PLANE <b>L</b> WAS	
C	ADDED DIMENSION <b>N</b> REF AND RELATED INFO TO OUTPUT CONFIGURATION CHART	
C	ADDED DUST SHIELDS TO SECTIONS X-X AND AA-AA	11SE06 RH/JF



FR2



THE INFORMATION CONTAINED HEREIN IS PROPRIETARY AND THE PROPERTY OF ALLISON TRANSMISSION, INC. AND MAY NOT BE REPRODUCED, DISCLOSED OR USED FOR ANY PURPOSE OTHER THAN A QUOTATION TO OR ON ORDER FROM ALLISON TRANSMISSION, INC. WITHOUT THE SPECIFIC WRITTEN AUTHORIZATION OF ALLISON TRANSMISSION, INC.

DIMENSIONS SHOWN IN PARENTHESES ARE IN INCHES, AND FOR REFERENCE ONLY

FR1 DWG. NO. AS67-441

LTR SH L 2

SCALE 1/2

MODEL 4000 PRODUCT FAMILY

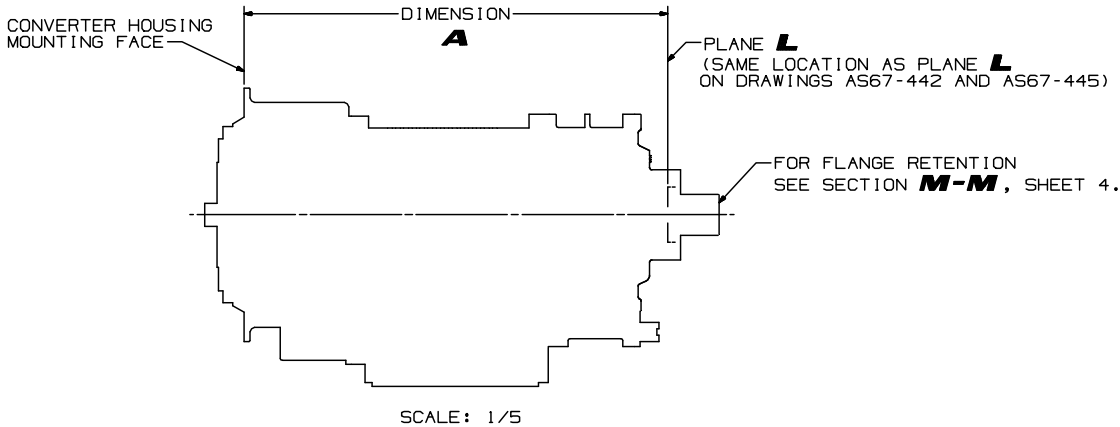
SIZE CAGE CODE DWG NO. R 73342 AS67-441

CURRENT STATUS: RX-Released - EXP

AS67-441

OUTPUT CONFIGURATION DETAIL DIMENSIONS - ALLISON COMPONENTS			
	FIGURE VI	FIGURE VII	FIGURE VIII
PART NUMBER	ALLISON 29542527	ALLISON 29549533	ALLISON 29541697
PART NAME AND DESCRIPTION	1810 SERIES -THRU HOLES-	1880 SERIES -THRU HOLES-	150 180 CROSS SERRATED
DUST SHIELD	ALLISON 29540168 INCLUDED	ALLISON 29540168 INCLUDED	ALLISON 29540168 INCLUDED
DIMENSION <b>B</b>	127.4 (5.02)	128.0 (5.04)	127.0 (5.00)
DIAMETER <b>C</b>	196.85-196.90 (7.750-7.752)	NOT APPLICABLE	NOT APPLICABLE
DIAMETER <b>D</b>	202.4-204.0 (7.97-8.03)	242.8 (9.56)	180.0 (7.09)
DIAMETER <b>E</b>	11.16-11.21 (.439-.441)	15.93-15.98 (.627-.629)	15.00-15.20 (.591-.598)
DIAMETER <b>F</b>	184.15 (7.250) REF	209.55 (8.250) REF	150.00(5.906) REF
DIMENSION <b>G</b>	1.27-1.52 (.050-.060)	NOT APPLICABLE	1.5 (.06)
DIMENSION <b>H</b>	10.5 (.41)	15.8 (.622)	29.0 (1.14)
DIMENSION <b>N</b> REF	34.8 (1.37)	34.8 (1.37)	34.8 (1.37)
APPROXIMATE WEIGHT	6.0 kg (13.2 LB)	6.5 kg (14.3 LB)	8.9 kg (19.6 LB)
NUMBER OF BOLTS REQUIRED	12-SAE GRADE 8	8-SAE GRADE 8	4-ISO CLASS 10.9
NUMBER OF LOCKING NUTS REQUIRED	12-SAE GRADE 8	8-SAE GRADE 8	4-ISO CLASS 10
BOLT SIZE	THRU-HOLE FOR .4375 INCH-SERIES BOLT	THRU-HOLE FOR .625 INCH-SERIES BOLT	NOT APPLICABLE
BOLT TORQUE	87-104 N·m (64-77 LB-FT)	262-305 N·m (193-225 LB-FT)	NOT APPLICABLE
TORQUE CAPACITY OF FLANGE *	34300 N·m (25300 LB-FT)	NOT AVAILABLE	NOT AVAILABLE

TRANSMISSION CONFIGURATION	DIMENSION <b>A</b>
BASIC	921.5 (36.28)
WITH POWER TAKE-OFF	994.5 (39.15)
WITH RETARDER	921.5 (36.28)
WITH POWER TAKE-OFF AND RETARDER	994.5 (39.15)



COMPANION FLANGE ASSEMBLIES WITH THRU HOLES: 7-SPEED MODELS ONLY

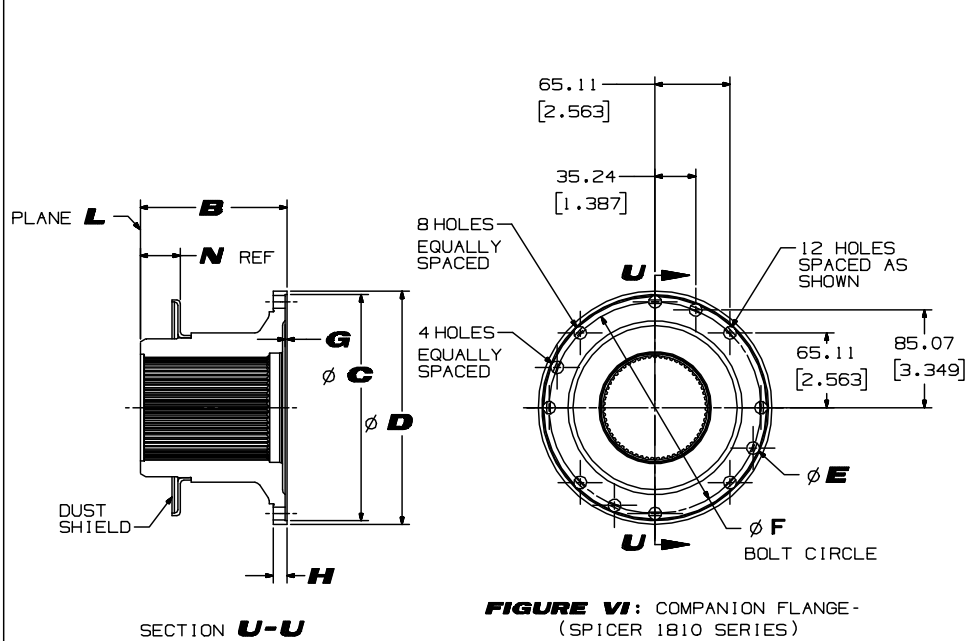


FIGURE VI: COMPANION FLANGE-  
(SPICER 1810 SERIES)

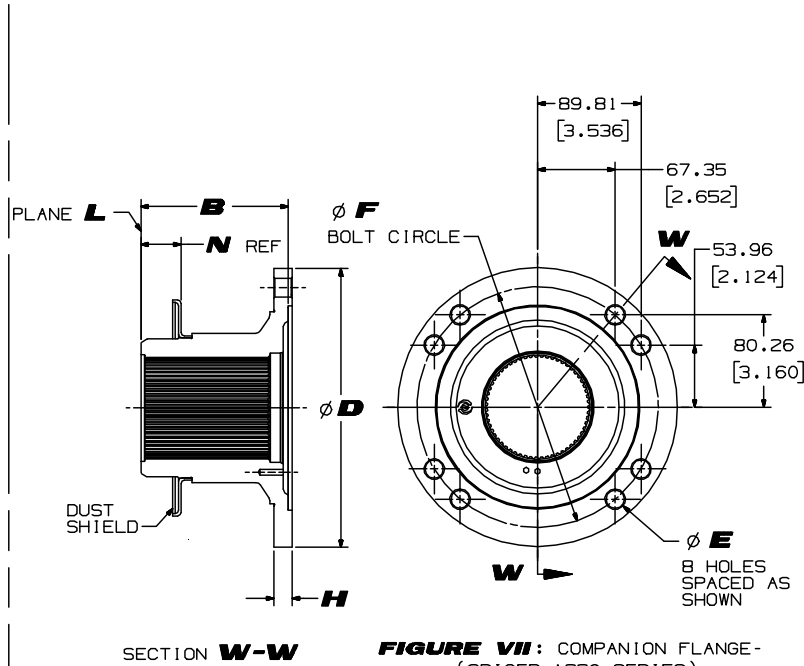


FIGURE VII: COMPANION FLANGE-  
(SPICER 1880 SERIES)

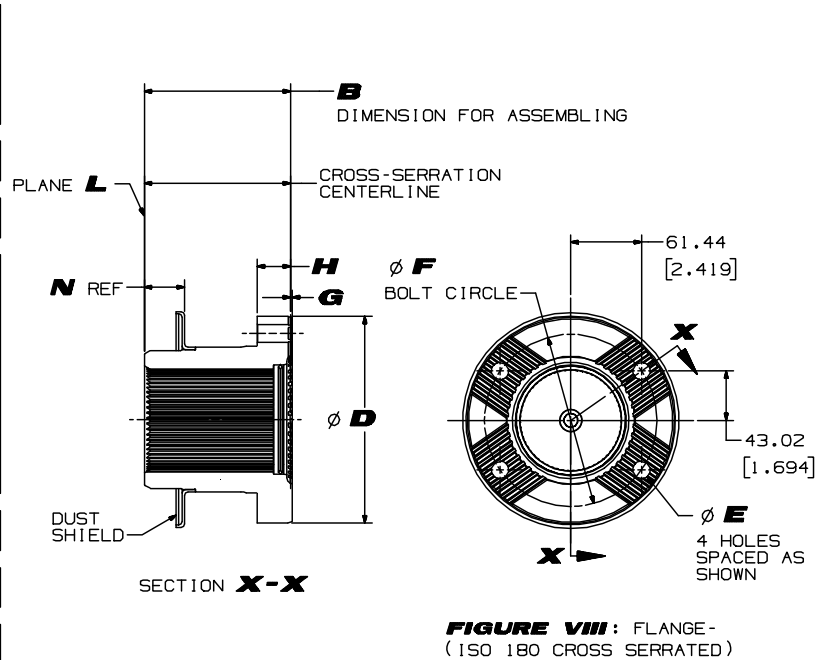


FIGURE VIII: FLANGE-  
(150 180 CROSS SERRATED)

TORQUES SHOWN ARE FOR PLAIN (NON-PLATED) FASTENERS AND OTHER THREADED COMPONENTS SUPPLIED AND INSTALLED BY THE VEHICLE BUILDER. TORQUE REQUIREMENTS SHOULD BE REVIEWED IF PLATED FASTENERS WILL BE USED.

\* DRIVESHAFT TORQUE MAY BE LIMITED BY BOLTED JOINT TO COMPANION FLANGE OR BY OTHER DRIVELINE COMPONENTS

DIMENSIONS SHOWN IN PARENTHESES ARE IN INCHES, AND FOR REFERENCE ONLY

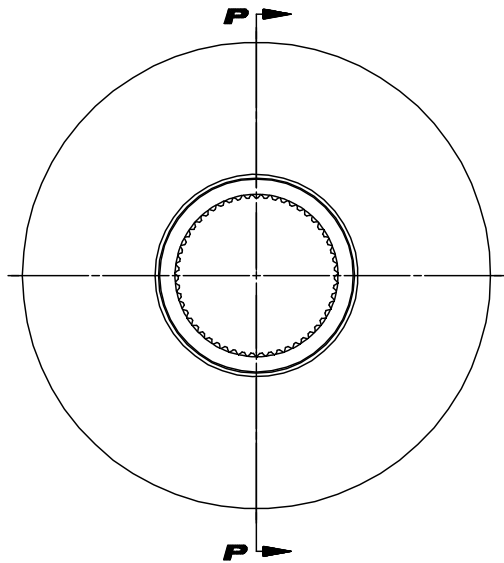
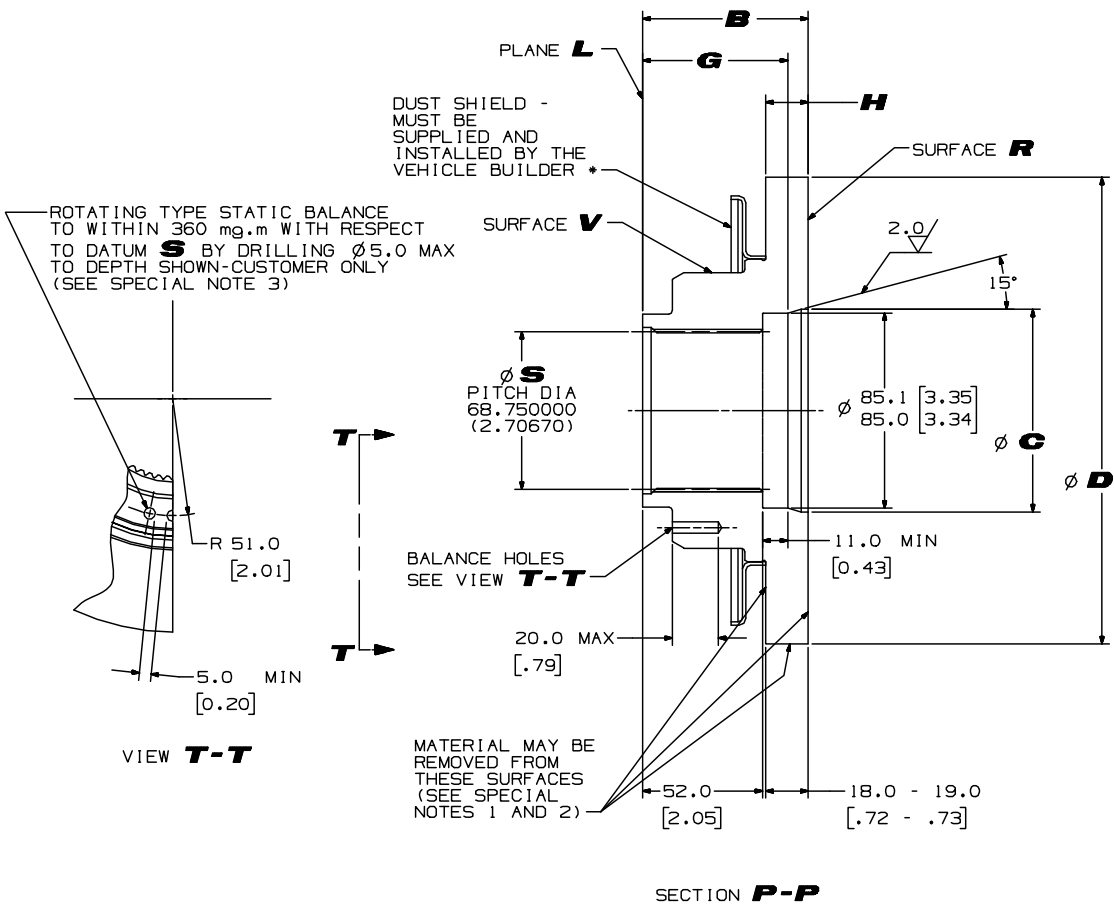
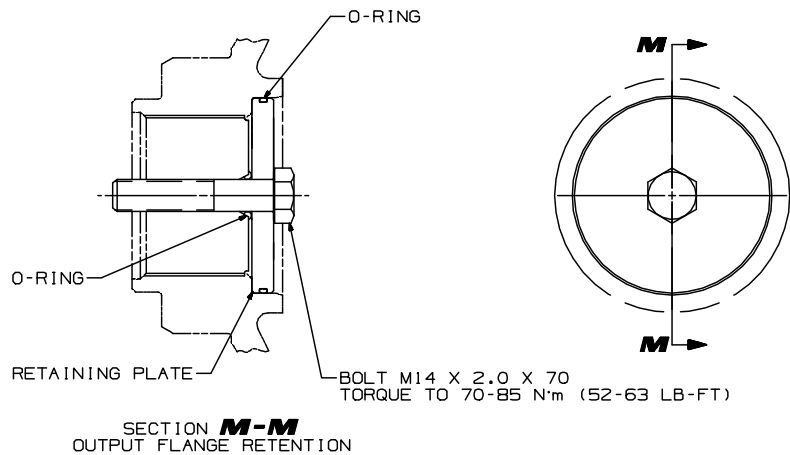
FR1 DWG. NO. AS67-441

FR2	CHANGE RESTRICTED
METRIC	
THIRD ANGLE	
THE INFORMATION CONTAINED HEREIN IS PROPRIETARY AND THE PROPERTY OF ALLISON TRANSMISSION, INC. AND MAY NOT BE REPRODUCED, DISCLOSED OR USED FOR ANY PURPOSE OTHER THAN A QUOTATION TO OR ON BEHALF FROM ALLISON TRANSMISSION, INC. WITHOUT THE SPECIFIC WRITTEN AUTHORIZATION OF ALLISON TRANSMISSION, INC.	

L	(3) REMOVED "ALLISON 4TH GENERATION" BLOCK	310C16	RH/JF
J	(3) ADDED "TORQUE CAPACITY OF FLANGE AND RELATED INFO"		
(4)	REVISED "DRIVESHAFT TORQUE MAY..." NOTE	13DE10	RH/JF
H	(4) ADDED FIGURE VIII AND RELATED INFO		
(5)	ADDED FIGURE VIII CHART INFO		
(6)	UPDATED FIGURE VII: COMPANION FLANGE		
(7)	REVISED FIGURE VII: DIMENSION F 209.55 (8.250) WAS 104.77 (4.125)		
(8)	REVISED FIGURE VII: DESCRIPTION "1810 SERIES THRU HOLES" WAS "1710 SERIES THRU HOLES"	20AP10	RH/JF
G	(1) ADDED FIGURE VII AND RELATED INFO		
(2)	ADDED FIGURE VII CHART INFO		
(3)	REVISED FIGURE "VI" WAS "I"	06JA09	RH/JF
(4)	REVISED CHART "VI" WAS "I"		
D	REVISED "OUTPUT CONFIGURATION DETAIL DIMENSIONS - ALLISON COMPONENTS" CHART	06FE08	RH/WF
C	REVISED "SECTION Z-Z" PLANE "L" WAS "P" ADDED "8 HOLES EQUALLY SPACED" CALLOUT ADDED "4 HOLES EQUALLY SPACED" CALLOUT REVISED "PLANE L" WAS "PLANE L (SAME LOCATION AS PLANE L ON DRAWINGS AS67-442 AND AS67-445) UPDATED TO LATEST HARDWARE"	11SE06	RH/WF
B	(1) FLANGE TORQUE CAPACITY WAS MAXIMUM NET DRIVE SHAFT TORQUE (2) ADDED TORQUE MAY BE LIMITED NOTE (3) 34,300 N·m (24,300 LB-FT) WAS 16400 N·m (12100 LB-FT)	12SE05	JH/WF
A	(1) ALLISON P/N 29542527 WAS 29540503	16MY05	MD/WF
REV	DESCRIPTION	DATE	BY/CHK

ALLISON Transmission	Indianapolis, Indiana, USA
INSTL DWG-OUTPUT FLANGE INFORMATION	
MODEL 4000 PRODUCT FAMILY	
SIZE/CAGE CODE	DWG NO.
R 73342	AS67-441
SCALE 1/1	SHEET 3
CURRENT STATUS: RX-Released - EXP	

OUTPUT CONFIGURATION DETAIL DIMENSIONS - ALLISON COMPONENTS	
<b>FIGURE IX</b>	
PART NUMBER	ALLISON 29541105
PART NAME AND DESCRIPTION	BLANK FLANGE
DUST SHIELD	ALLISON 29540165 SOLD SEPARATELY
DIMENSION <b>B</b>	71.8 (2.83)
DIAMETER <b>C</b>	88.20 (3.472)
DIAMETER <b>D</b>	203.2 (8.00)
DIMENSION <b>G</b>	63.0 (2.48)
DIMENSION <b>H</b>	18.5 (0.73)
APPROXIMATE WEIGHT	5.0 kg (11.0 LB)



- SPECIAL NOTES FOR CUSTOMERS:
1. WHEN REMOVING MATERIAL FROM SURFACE **R** DO NOT REMOVE LEAD-IN CHAMFER ON Ø85.00/85.10 BORE.
  2. DO NOT MACHINE SURFACE **V**.
  3. STATIC BALANCE IS RECOMMENDED AFTER FLANGE SURFACES HAVE BEEN MACHINED AND BOLT HOLE PATTERN HAS BEEN DRILLED.

THIS FLANGE INTENDED FOR REWORK TO MATCH FLANGE YOKES ENCOMPASSING THE FOLLOWING SIZES:  
DIN Ø150 THRU Ø180, GWB SERIES 587.20 THRU 587.42, SPICER 1600/1610 THRU 1800/1810 SERIES  
MUST BE CLEAN AND FREE FROM BURRS

\* IF APPLICABLE, INSTALL FLANGE BOLTS FROM TRANSMISSION SIDE BEFORE INSTALLING DUST SHIELD ON FLANGE

DIMENSIONS SHOWN IN PARENTHESES ARE IN INCHES, AND FOR REFERENCE ONLY

FIGURE IX: BLANK FLANGE

L	(4)REVISED FIGURE "IX" WAS "VIII"	310C18	RH	JH
H	(9)REVISED "BOLT M14 X 2.0 X 70" TORQUE TO 70-85 N·m WAS 70-80 N·m	20AP10	RH	JH
G	(5)REVISED FIGURE "VIII" WAS "VI" BLANK FLANGE (6)REVISED FIGURE "VIII" WAS "VI" CHART INFO (7)REVISED NOTE 2. DO NOT MACHINE SURFACE "V" WAS "W" (8)REVISED CALLOUT SURFACE "V" WAS "W".	06JAG9	RH	JH
F	(6)RETAINING PLATE WAS RETAINER PLUG (7)REVISE OUTPUT CONFIGURATION DETAIL CHART, ADD DUST SHIELD AND RELATED INFORMATION (8)FLANGE PART NUMBER WAS PART NUMBER (9)SURFACE <b>W</b> WAS SURFACE <b>U</b> (10)REVISE NOTE, "DO NOT MACHINE SURFACE <b>W</b> " (11)ADD CALLOUT, "DUST SHIELD MUST BE..." (12)ADD NOTE, "IF APPLICABLE, INSTALL FLANGE..." (13)REMOVE LEADER FROM CALLOUT, "MATERIAL MAY BE REMOVED FROM THESE SURFACES"	05N008	MT	MF

NX	FR2
	DATE 04FE08
	CHECKED
	CHANGE RESTRICTED
METRIC	
THIRD ANGLE	
THE INFORMATION CONTAINED HEREIN IS PROPRIETARY AND THE PROPERTY OF ALLISON TRANSMISSION, INC. AND MAY NOT BE REPRODUCED, DISCLOSED OR USED FOR ANY PURPOSE OTHER THAN A QUOTATION TO OR ON ORDER FROM ALLISON TRANSMISSION, INC. WITHOUT THE SPECIFIC WRITTEN AUTHORIZATION OF ALLISON TRANSMISSION, INC.	

DRAWN R. HIGGINS	DATE 04FE08	CHECKED	DATE	APPROVED	DATE	PROJ. ENGR.	DATE	APPL. ENGR.	DATE
SPECIFIED DIMENSIONS HAVE PRECEDENCE OVER COMPUTER GENERATED DATA				CHANGE RESTRICTED					
Allison Transmission				Indianapolis, Indiana, USA					
INSTL DWG-OUTPUT FLANGE INFORMATION				MODEL 4000 PRODUCT FAMILY					
SIZE CAGE CODE DWG NO				R 73342 AS67-441					
SCALE 1/1				SHEET 4					
CURRENT STATUS: RX-Released - EXP									